

# TF500

2.4GHz wireless fishfinder



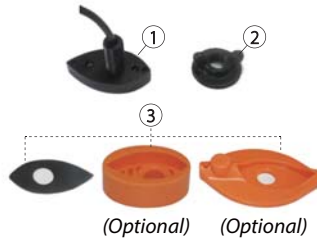
**TOSLON**

# Check the content

Display



Transducer



1) Transducer 2) Knobs 3) Rubber

*Note: the rubber is different according to different bait boats*

Transmitter



1) Transmitter 2) Antenna for display  
3) Power cable 4) Battery holder 5) Antenna extended cable 6) Antenna for transmitter  
7) Valcro

# Installation (transducer)

1) For general boats, like Carp Madness, Anatec Monocoque, you need need to drill a hole on the boat bottom to fix the transducer.



2) For boats of Carplounge/-Waveruner/ Vegaboat/Carpboat etc, there is a transducer groove on the bottom. So, you only need to simply match the transducer to the boat with a rubber.



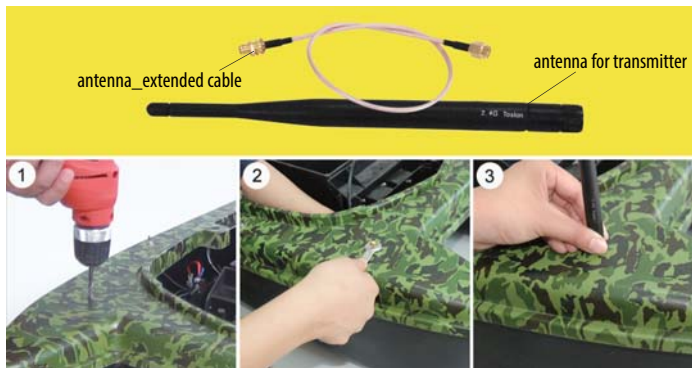
3) For Anatec catamaran bait boat, there is a transducer groove on the bottom. So, you only need simply match the transducer to the boat with a rubber.



# Installation (antenna & wiring)

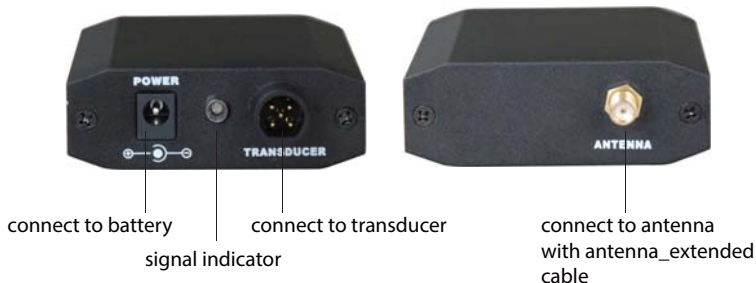
## Antenna Installation

- 1) Drill a hole (5mm diameter) on the selected position.
- 2) Screw down the wisher and nut from the antenna extended , then hold the DC cable through the hole from inner housing, and Screw tighted the nut by an wrench.
- 3) Screw the antenna on boat



## Wiring

After all the installation are finished, please connect the parts (transducer, antenna, battery) to the transmitter. Then fix the transmitter inner the boat.



	For display	For transmitter
Recommended voltage	6-12V	6-12V
Absolute Maximum voltage	14.8V	14.8V

→ **Note:** overvoltage may burn the elements in the device!

From below shows the voltage range of the most popular batteries in the market:

Battery Type	Voltage	Permission
12V Lead-acid	10.8v~14.8V	✓
8*AA NiMH	7.8V~10.6V	✓
8*AA Alkaline	7.5V~12.8V	✓
2S Lithium	5.6~8.4V	✓
3S Lithium	8.4~12.6V	✓
4S Lithium	11.2V~16.8V	✗

 <p>12V lead-acid</p>	 <p>2S Lithium</p>
 <p>8AA NiMH</p>	 <p>3S Lithium</p>
 <p>8AA Alkaline</p>	 <p>4S Lithium</p>

# Using Instruction

---

1) Please do not put the display on ground during the operation, which could cause a short R/C distance.

The proper way is using an tripod to support the display, and keep it at least 1.2m above the ground.

2) Make sure the antenna is tighten on the boat, otherwise the R/C distance will be greatly shorten.

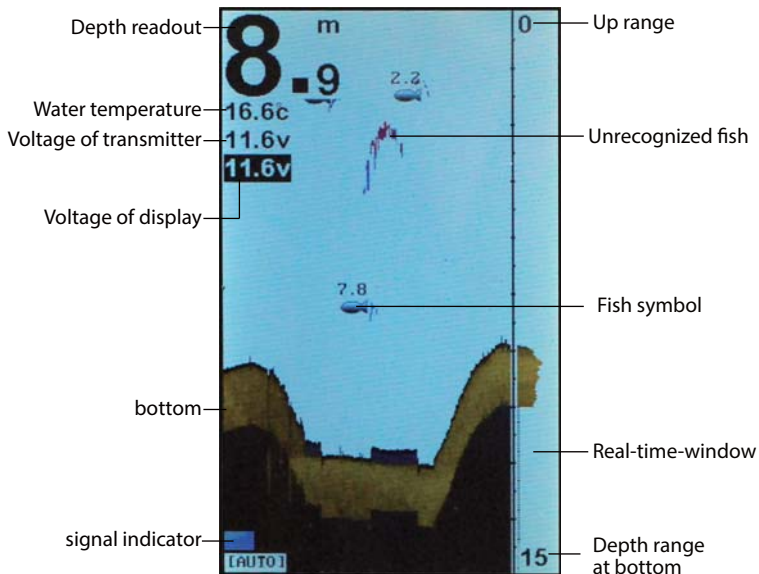




<b>Menu</b>	Open Menu settings; Switch between menus
<b>Ent</b>	Finalizes menu selections; confirm a setting
<b>Up arrow</b>	Move up to select menu; increase a value of option
<b>Down arrow</b>	Move down to select menu; decrease a value of option
<b>Power &amp; Exit</b>	Turns unit on/off. Also be use to quit a menu setting

→ **Note:** during the unit working, you can press the UP arrow to “freeze” the screen. Press any key will unfreeze the screen.

# What's on the display





In most time the default setting is enough. However in some situation, to get a better using, you need adjusting the menu setting.

## 1) Sensivity

Determines how echoes will be displayed on the screen. Increasing the sensitivity will make you see more details on the screen. In deep water, increasing the sensitivity, whereas in shallow decreasing the sensitivity.

How to set a Sensivity?

- 1) Press **MENU** Key, and use keypad to choose **【Sensitivity】**
- 2) Press **ENT** key to conform the selection.
- 3) Press **UP arrow/Down arrow** key to increase/decrease the value.
- 4) Press **ENT** key to confirm the setting.



## 2) Fish ID. Sens.

Fish ID. Sens. adjust the threshold of fish size display  
Selecting a higher setting allows weak returns being displayed as fish, which is helpful especially when you are intending to find smaller fish species or bait fish.

Selecting a low setting will prevent weak sonar returns being displayed as fish, which will be very helpful when you are seeking large species of fish.



# Menu List

Basic	Sensitivity	Controls the level of details shown on the display.
	Fish ID. Sens.	Adjust the threshold of fish size display. higher setting allows weak returns being displayed as fish, while a low setting will prevent it being displayed as fish.
	Depth Range	Determine in which portion the bottom will be displayed on the screen.
	Night Mode	Set the background to black and dimming the backlight automatically.
Advanced	RF Channel	Set different RF channel to allow more than one users operating the device in the same region without any radio interference.
	Backlight	Badjust the brightness of backlight.
	Background	Change the background of the screen.
	Color Scheme	Set displaying bottom in color mode or in sandy style.
	Color Line	Separates strong sonar echoes from weak sonar echoes. That makes it easier for you to distinguish fish for structure from the bottom.
	Beeper	Set if the sonar unit sound a tone or not when a key is pressed.
	Fish Alarm	Fish Alarm sounds when the fishfinder detects what it determines to be a fish.
	Shallow Alarm	Sounds when the depth becomes equal to or less than the menu setting.
	Battery of Display	Sounds when the input battery voltage of display is equal to or less than the setting.
	Battery of Boat	Sounds when the input battery voltage of transmitter is equal to or less than the setting.
	Measure Units	Set the units of measure for all depth-related readouts.
	Language	Select the display language for menus.
	System Reset	Used to restore original factory setting.
	Simulator	Used to let you practicing using the Fishfinder as if you were on the water.
System Info.	Show system information of device.	
Baud Rate	Used to control data transmission with external device.	

# Specifications and Features

<b>Specifications</b>	Display	Display size: 4.3" TFT LCD; Sunlight Viewable
		Resolution: 480*272 Pixels; 65,536 color
		Language: Multi-language
		Monitor and Display Real-time Voltage of Bait boat Battery
		IPX6 Level Waterproof Casing Design
	Sonar	Depth Capability: 30m (100ft)
		Sonar Frequency: 115Khz
		Sonar Beam Angle: 60deg @-10db
		Sonar Alarms: Fish / Shallow / Low Battery
	R/F	RC Distance(field test): Max 300m (1000ft)
		Radio Frequency: 2.4Ghz
		RF Channels: 20
		RC Power: 20dBm
	Power	Power of Display: 6~12V lithium battery or 8 * AA Battery
		Power of Transmitter: Powered by bait boat battery or DC6~12V/2.0W
	Technical and casing	Sensor Cable Length: 0.5m
Sonar unit size: 153 x 110 x 44mm; Portable Case Size: 262 x 150 x 98mm		
Operational Temperature: -10°C ~ 50°C		
Water Temp. Included in Transducer		
<b>Features</b>	Features	Extreme stable wireless performance even in bad condition
		Display target depth reading above each fish symbol
		Big / small fish identification
		Rugged portable case for a full protection of the fishfinder
		Full two-year warranty; extended warranties available



SPECIALLY DESIGNED FOR ALL KINDS OF

# BATBOAT

**YACHTING ELECTRONIC CO., LTD**

Building 29, No. 2 Qiancheng Road,  
Liuhe District, Nanjing City, China 211500

Tel: 0086-25-85399011 Fax: 0086-25-85359123

Email: [support@goyachting.cn](mailto:support@goyachting.cn)

[www.toslon.com](http://www.toslon.com)